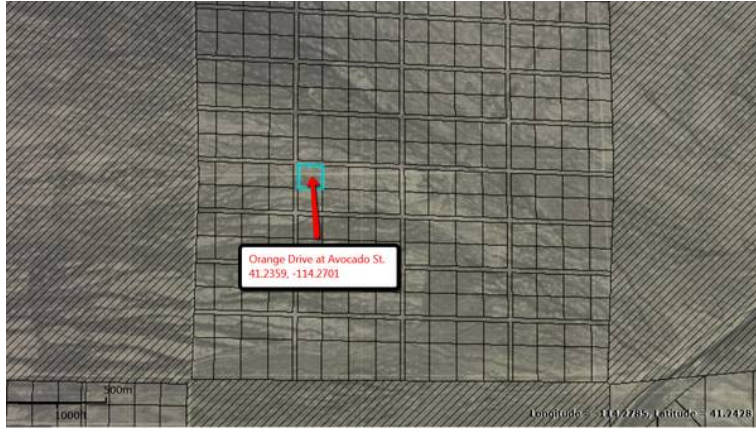


x00242900 98881ft2 (21342.3, USD)



Location **Utah**
<https://www.genclassifieds.com/x-382187-z>

Parcel Number: 011-106-034

2.3 Rustic Acres near Montello, NV

Legal Description: SUNLAND ACRES 2 Lot 134
 P Size: 2.3 Acres (98,881 square feet)
 Price: \$2,900 98,881 Sq. Ft. Elko County, NV 89803
 Location: Northeastern Nevada near Montello, NV and the Utah border.

Legal Description: SUNLAND ACRES 2 Lot 134

Access: 58 miles from Wendover, NV and 5.6 miles from Montello, NV via Pilot Road. See pictures for directions from Montello.

A great "getaway" parcel. Power would be by gas generator or wind; water by well (must be installed) or holding tank; No sewer -- need to install only if you build; cell phone only. Access is by dirt road. Taxes are less than \$100 per year, no time limit to build and no association dues. The terrain is level to slightly sloping.

CASH Price is \$2,900. Easy terms are available with \$99 down and \$99/month.

 https://www.genclassifieds.com/x-382187-z x00242900 98881ft2	 https://www.genclassifieds.com/x-382187-z x00242900 98881ft2	 https://www.genclassifieds.com/x-382187-z x00242900 98881ft2	 https://www.genclassifieds.com/x-382187-z x00242900 98881ft2	 https://www.genclassifieds.com/x-382187-z x00242900 98881ft2	 https://www.genclassifieds.com/x-382187-z x00242900 98881ft2	 https://www.genclassifieds.com/x-382187-z x00242900 98881ft2	 https://www.genclassifieds.com/x-382187-z x00242900 98881ft2	 https://www.genclassifieds.com/x-382187-z x00242900 98881ft2	 https://www.genclassifieds.com/x-382187-z x00242900 98881ft2
--	--	--	--	--	--	--	--	--	--

Distance (miles) to nearest town:

Wendover, NV: 58 miles
 Montello, NV: 5.6 miles
 Elko, UT: 100 miles
 Reno, NV: 388 miles
 Las Vegas, NV: 62 hours, 30 minutes

The Town of Montello

Present-day Montello began in 1904 when the Southern Pacific Railroad built the Lucin cutoff across the salt flats of Utah. The first train came through Montello on March 4, 1904. Montello was first known as

Bauvard, also the name of the old siding located three miles to the southwest. The railroad built a large hotel as well as complete railroad facilities at Montello. Forty residents supported a general merchandise store. A library building was built that also served as a school. From 1904 to 1929 Montello's population grew to around 800. The town also served as a supply point for the mining camp of Delano. A new school was constructed and opened in 1910. Montello began to decline in the 1920s after a major fire destroyed many buildings in the downtown area including the post office, a restaurant, a pool hall, and a house or two. The introduction of diesel engines in 1950s spelled the end of Montello's importance to the railroad. The roundhouses and shops were removed and only the huge water tower was left behind. Today Montello is a quiet town with a population of seventy-five. Many of the homes from 1904 remain along with the school and other old buildings.

Keywords: Montello, cheap, land, acreage, Nevada, Mountains, RV