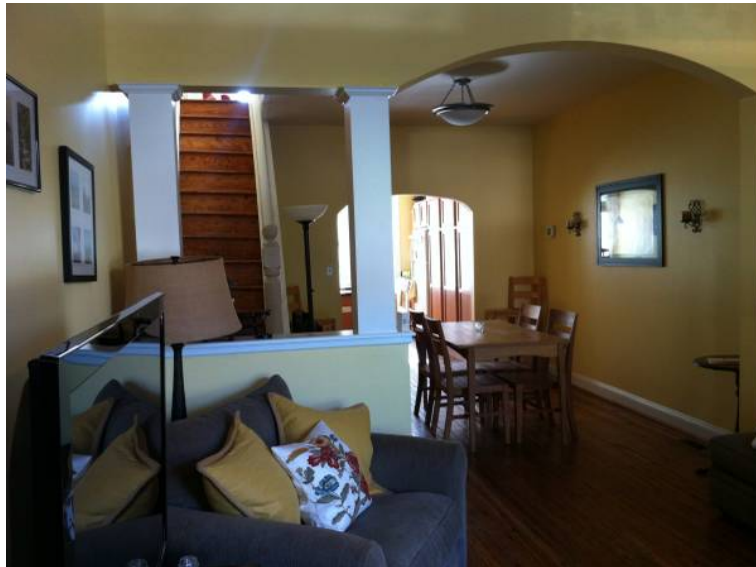


1700 2br (13502 USD)




Location **Maryland**
<https://www.genclassifieds.com/x-563764-z>

BEAUTIFUL LARGE OPEN ROW HOUSE

2 Large Bedrooms with 2 Full Bathrooms on Upper Level
 Finished Basement with Half Bathroom that past tenants have used for a third large bedroom!
 Gorgeous Refinished Kitchen with Granite Countertop
 Wide and Open Floor Plan - great for entertaining
 Kitchen Flows out to Backyard with Lovely Patio
 Skylights in Upstairs Hallway allow Light to Flow down the Stairs to the Main Floor

House Located 1.5 Blocks from Patterson Park
 Patterson Park is 155 Acre Park with Running Trails, Walking Trails, Basketball Courts, Volleyball Courts, Baseball Diamond, Soccer Fields, a Pool, a Dog-park, a Playground for the kids, The Pagoda, Concerts in the Park. . .Bootcamps in the Park. . .Festivals in the Park!!! So much to do!
 Bistro Rx within a few blocks
 Easy Walk to "The Square" in Canton - restaurants, bars, shops!
 Walking distance to Johns Hopkins Hospital (JHH) as well

Easy drive to Downtown Baltimore
 Easy drive to 83 going towards Towson, Hunt Valley, Timonium, etc.
 Easy drive to 95 - go north to White Marsh or south to Columbia or DC

 <p>https://www.genclassifieds.com/x-563764-z</p> <p>1700 2br</p>	 <p>https://www.genclassifieds.com/x-563764-z</p> <p>1700 2br</p>	 <p>https://www.genclassifieds.com/x-563764-z</p> <p>1700 2br</p>	 <p>https://www.genclassifieds.com/x-563764-z</p> <p>1700 2br</p>	 <p>https://www.genclassifieds.com/x-563764-z</p> <p>1700 2br</p>	 <p>https://www.genclassifieds.com/x-563764-z</p> <p>1700 2br</p>	 <p>https://www.genclassifieds.com/x-563764-z</p> <p>1700 2br</p>	 <p>https://www.genclassifieds.com/x-563764-z</p> <p>1700 2br</p>	 <p>https://www.genclassifieds.com/x-563764-z</p> <p>1700 2br</p>	 <p>https://www.genclassifieds.com/x-563764-z</p> <p>1700 2br</p>
---	--	--	--	---	--	--	--	--	--